

Welcome to the Gibbes Museum of Art



What is the Gibbes Museum of Art?



Hello! We look forward to your visit to the Gibbes Museum of Art. We have so much for you to see inside!

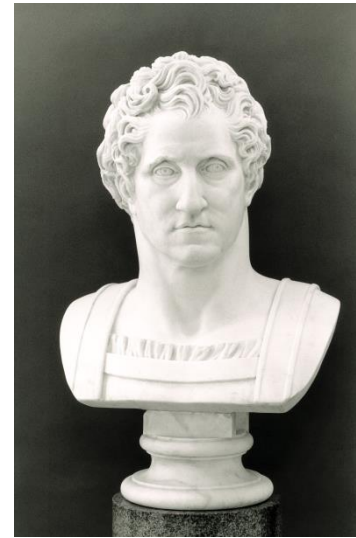
The Museum opened in 1905...over 100 years ago! You will see many different kinds of art while you are here. And, the artwork ranges from the Colonial period to today. You will learn a lot about where we live and how artists portrayed this unique city and part of the country.

There is so much to learn and we are excited to meet you.

What types of art will you see?



Paintings



Sculptures



Photographs



Prints and Drawings

Some things to know before your visit



You will be led by a guide who is called a Museum Educator.

Please leave book bags, food, and drink on the bus.

Don't Touch the Artwork



Staying an arm's length away from the works of art is very important, even for the Museum Educators.

Art objects are more fragile than you think. Even a finger from very clean hands has oils that could harm the artwork.

You may want to hold your hands together or keep them in your pockets.

Walk, Don't Run



When walking through the Museum, stay with your teacher, class, and especially your Museum Educator!

Be Considerate of Other Guests



Use your inside voices while visiting the Museum.

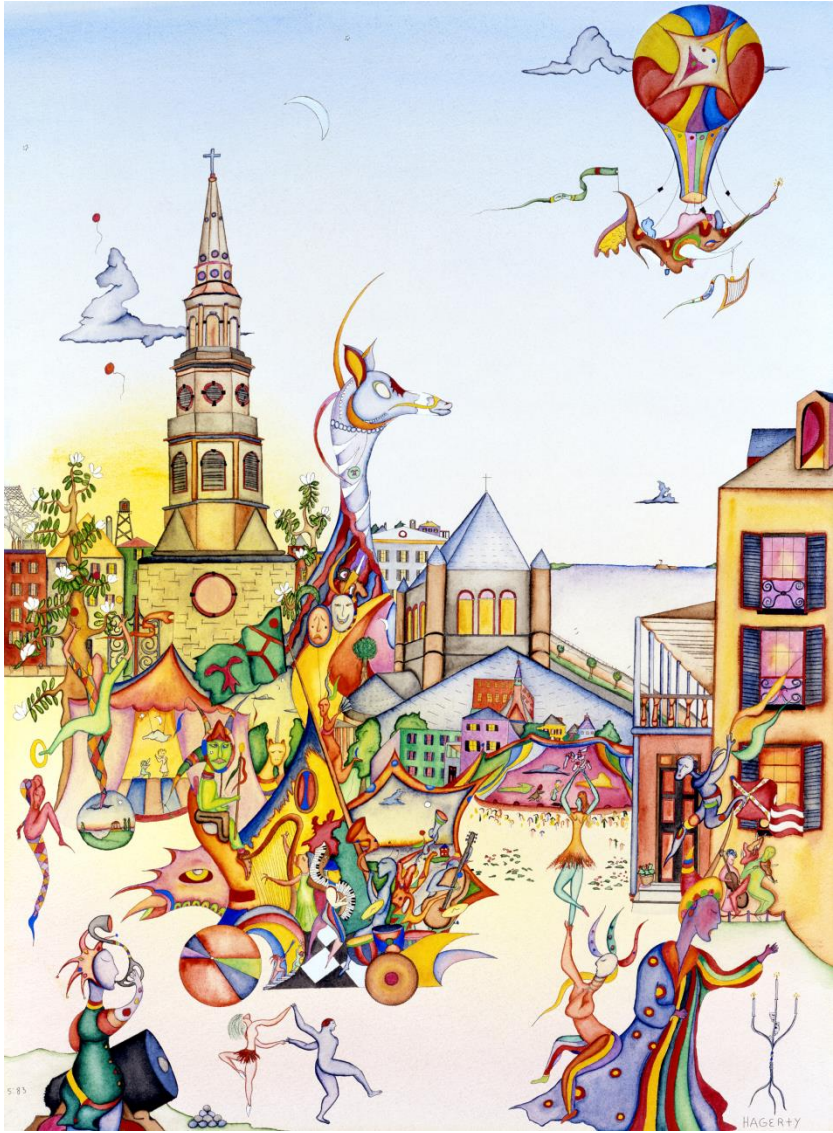
Ask Questions



Please ask questions by raising your hand.
We all want to hear what *you* have to say!

We want you to talk and tell us what you
think about what you see.

Have Fun!



We look forward to your visit.
See you soon!



Image captions (in order of appearance)

- ***Mrs. Robert Gilmor, Jr. (Sarah Reeve Ladson), 1823***, by Thomas Sully (American, 1783–1872); oil on canvas; 36 1/8 x 28 ¼ inches; 1942.010.0003
- ***George Washington, ca. 1792***, attributed to Giuseppe Ceracchi (Italian, 1751–1802); marble; 23 7/8 x 20 inches; 1917.002.0001
- ***Botany Bay Plantation Boardwalk, 2009***, by John Folsom (American, b. 1967); archival pigment print on board with oil and wax; 48 x 60 inches; 2010.004
- ***Sea Turtle, 1929***, by Anna Heyward Taylor (American, 1879–1956); woodblock print on paper; 10 x 11 inches; 1958.004.0002
- ***Untitled, 1992***, by Sol LeWitt (American, 1928–2007); serigraph on paper; 34 ½ x 23 inches; 2004.009
- ***Child and Sculpture, 1961***, by James Richard Burbage (American, 1919–1995); gelatin silver print; 14 x 11 inches; 1962.019.0001
- ***Beauties in Snow at Sumida River from the series Famous Places of Edo in the Four Seasons, 1847–1848***, by Ichiryusai Hiroshige (Japanese, 1797–1858); woodblock print, Ôban triptych, on paper; 1948.004.0022.001–003
- ***Porch Party, Charleston, 2005***, by Red Grooms (American, b. 1937); gouache on paper; 40 ¾ x 30 inches; 2005.005
- ***American Eye Miniature, ca. 1830s***, by unknown artist; watercolor on ivory; 1 inch diameter; 2012.003.0002
- ***Charleston, 1983***, by Richard Hagerty (American, b. 1950); watercolor on paper; 30 x 22 ¾ inches; 1986.005
- ***Shoe Study #1, 1975***, by William Welch (American, b. 1955); acrylic, mixed media, and tennis shoes on canvas; 1975.020.0001